

Community of Saint Antimo

Abbazia di Sant'Antimo

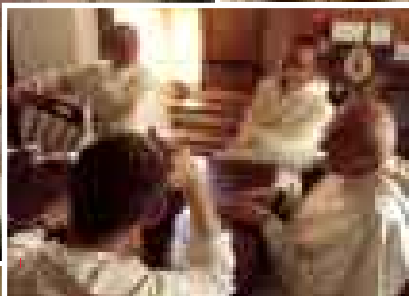
I-53020 Castelnuovo
dell'Abate (SI)

Tel: (+39) 0577 835659

Fax: (+39) 0577 835603

abbazia@antimo.it

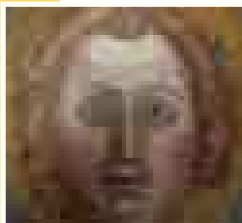
www.antimo.it



Who was Saint Antimo?

Saint Antimo was a martyr, which means that he was put to death by other men on account of his faith, and because of his love for Jesus Christ and His Church. He suffered martyrdom at the beginning of the 4th century. Some Martyrologists assert that he was a native from Arezzo, while others claim that he was from Sabina.

✠ You will find more details about this Saint in the guidebook entitled "A Stone that Sings, and a brother relates...".



Who are you?

We are a community of Regular Canons, which signifies that we are a group of priests and brothers dedicated to the liturgical and pastoral services connected to this church. The Rule of Saint Augustine sustains and nurtures our communal life.

✠ At www.antimo.it you will find ample explanations on our spirituality and our way of life.

Religious services

Weekdays		Sundays and Holidays	
Matins	5.45 a.m.	Sunday Vigil* 12.00 a.m.	
Lauds	7.00 a.m.	Lauds	7.30 a.m.
Terce	9.00 a.m.	Terce	9.00 a.m.
Holy mass	9.15 a.m.	Holy mass	11.00 a.m.
Sext	12.45 p.m.	Sext	12.45 p.m.
Lunch	1.00 p.m.	Lunch	1.00 p.m.
None	2.45 p.m.	None	2.45 p.m.
Vespers	7.00 p.m.	Vespers	6.30 p.m.
Supper	7.30 p.m.	Supper	7.15 p.m.
Compline*	8.30 p.m.	Compline*	8.30 p.m.

*July-August
Sunday Vigil:
1.00 a.m.
Compline:
9.00 p.m.

Can we visit the church?

The church is open from 5.45 a.m. (7.00 a.m. on Sundays) until 9 p.m. First and foremost the Abbey is considered to be a place of prayer, for which reason respect and silence are demanded during the visits. We courteously ask you not to take photos during the religious services. Thankyou very much.

Visiting hours

Weekdays:

10.30 a.m. - 12.30 p.m. /

3.00 - 6.30 p.m.

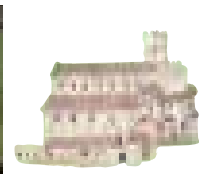
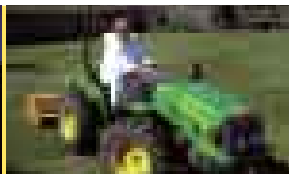
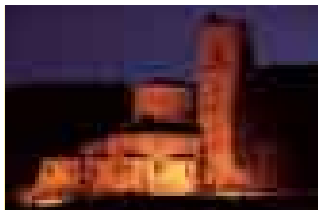
Sundays and Holidays:

9.15 - 10.45 a.m. / 3.00 - 6.00 p.m.

How frequently do you go to pray in the church?

Seven times a day you can find us in the church for the liturgy. The timetable indicates the hours when the community goes to pray.

✠ Visit our web site for more details of the Christmas and Easter Liturgical timetable.



Is it possible to make a retreat here?

There are two guest-houses available, where adults, couples, families, youngsters – i.e. everyone who wishes – can come to live moments of peace and prayer. These places are equipped for autogestion. Please try to remember that the monastery is a place where one concentrates on nearing oneself to God, and that it cannot be used for “taking a holiday”.

✉ foresterie@antimo.it

Do you always use the Gregorian Chant?

Yes. Here at Sant'Antimo this chant is used in all the religious services. It is our way of praying, i.e. an original way, according to a very old tradition in the Church. It's a prayer that helps to contemplate God and His Love for us. The CDs published by the Community, will give you ample information on Gregorian Chant.

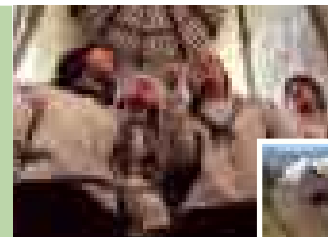
✉ Apply to the bookshop “L'Arca di Sant'Antimo”, or directly at www.edizioni.antimo.it

What proposals do you have for youngsters?

For youngsters, and particularly for Scouts, there are many proposals at Sant'Antimo. To give you an idea, just have a look at the Scout Centre Programme.

✉ www.antimoscout.it

✉ stefano@antimoscout.it



How does one get to Sant'Antimo?

The best way is by car. The nearest railway station is that of Buonconvento. For the District Bus Services, consult www.sena.it or else www.trainspa.it. The busline “Peschiera” connects Montalcino to Castelnuovo dell'Abate (Sant'Antimo) four times a day, but does not run on Sundays.

Can one have lessons on Gregorian Chant?

The Abbey of Sant'Antimo is one of the few places in Italy where one can listen to the Gregorian Chant, as well as learn to sing it. Also lessons on poliphonic music used for the liturgy, are offered. During the year, various music courses are proposed by the Community, in order to give everyone the possibility to open their hearts towards God, also by means of singing. The churchmusic choirs can also sing during the Sunday Mass.

✉ www.incanto.antimo.it

Which products do you have on sale?

Various items manufactured by various religious communities, can be purchased at the bookshop named “L'Arca di Sant'Antimo”. The “Edizioni Sant'Antimo” also propose the books and CDs realised by our community.

✉ www.edizioni.antimo.it

✉ arca@antimo.it

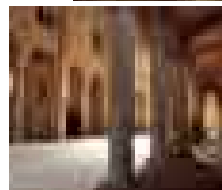
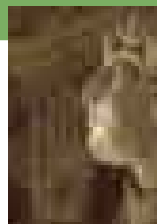
Tel: 0577 835699



When was the church erected?

The Romanesque church was built during the 12th century, in order to enlarge the preexistent monastery. As such, the actual structure is the result of diverse constructions and modifications executed over the centuries.

✉ On reading “A Stone that Sings and a brother narrates...” you will discover all the secrets connected to the Abbey of Sant'Antimo.



At www.antimo.it, you will find many pages in English language.